



ERA-PBTX Wireless Push Button

Introduction

The ERA-PBTX is a long-range wireless doorbell push button compatible with all ERA receivers. This manual outlines how to program the ERA-PBTX push button to an ERA receiver and will serve as the product manual for the kit and its products.

Helpful Notes

- All ERA transmitters are compatible with all ERA receivers.
- The ERA-PBTX is a push-button transmitter that must be programmed with an ERA-compatible receiver.
- The push button is outdoor rated and contains a silicone gasket to keep moisture out. Mount it with the small weephole pointing down to ensure any moisture in the unit evaporates.
- Push button measures 3.00" H x 2.25" W x 1.75" D.
- The halo ring around the center push will illuminate dimly for visibility at night.
- Then, when triggered (the center push button is pressed), the center halo will illuminate brightly for approximately 2 seconds.
- When programming multiple transmitters to an ERA receiver, the common practice is to program a distinct melody for each programmed transmitter to distinguish which transmitter was triggered.

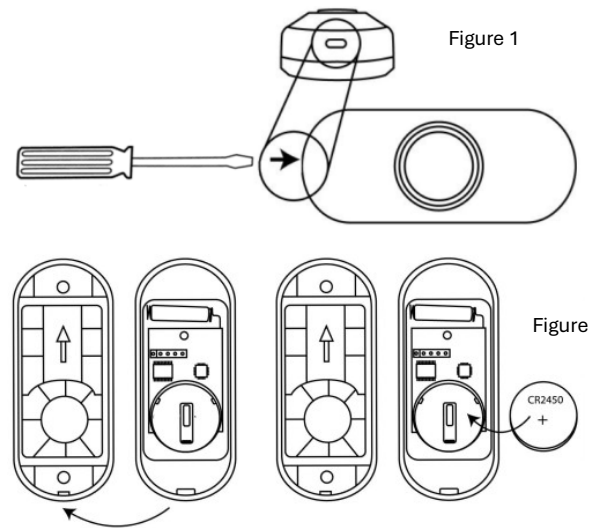
Button Battery Installation:

**This product contains a coin battery that could be dangerous to children. Please review the warnings regarding the batteries at the end of this manual.*

The ERA-PBTX comes with a battery installed. Pull out the plastic tab to activate the battery. Test the button by pressing the center push. The green halo LED lighting should illuminate around the center push.

Replacing the Battery:

1. Remove the silicon casket around the ERA-PBTX.
2. Open the front cover by removing the silicon gasket sleeve around the push button. Insert the included screwdriver into the square hole on the bottom of the unit (figure 1), gently push, and then separate the top and bottom halves of the case.
3. Remove the top part of the case from the lower part of the case (figure 2).
4. Install the included CR2450A 3V battery into the battery holder with the positive (+) side of the battery facing up (figure 2).
5. Replace the silicon gasket around the push button.
6. Test the battery by pressing the center push. The green halo should illuminate for approximately 2 seconds, signaling transmission. Note: Program the push button to a compatible receiver before mounting the push button.



Pair Transmitter to Receiver:

(always test the unit before installation)

The transmitter works with all ERA receivers. Basic programming requires the user to program a transmitter to the receiver and select a melody for the receiver to play when triggered by the transmitter.

Each ERA receiver may vary in how it is put into programming mode. Consult the “**Pair to Receiver**” section in the receiver’s usual manual for details. Once the receiver is in programming mode.

Once the transmitter is successfully programmed to the receiver, follow the receiver’s manual to change the melody, program an additional transmitter, or exit programming mode.

1. Ensure the battery is installed in the ERA-PBTX
2. Ensure the receiver you are programming the transmitter to is powered on and working correctly.
3. Put the receiver in programming mode. Consult the receiver’s user manual & follow the instructions for putting it into programming mode.
4. Press the center button to trigger the ERA-PBTX transmitter. The green halo around the center button should illuminate brightly.
5. The receiver will respond by notifying you that the push button has been successfully programmed to the receiver. Consult the receiver’s user manual for details.
6. Follow the receiver’s instruction manual to exit programming or to program an additional transmitter/sensor.

Test the Programming of Transmitter to Receiver:

- Once programmed, trigger the push button by pressing the center button. Ensure the receiver is plugged in and turned on.
- Test the range between the push button and receiver before mounting the push button.
- Press the center button to trigger the ERA-PBTX transmitter. The green halo around the center button should illuminate brightly.
- When triggered, the receiver should play a melody or chime sound.

Mounting the Push Button:

Ensure you have programmed & tested the push button before mounting. There are two mounting options: 1) using the supplied double-sided tape and 2) using the supplied mounting screws.

1. Open the front cover by inserting the included screwdriver into the square hole on the bottom of the unit (figure 1), and gently push in to separate the top & bottom parts of the push button.
2. Remove the top half of the case from the lower half of the case.
3. Place the case's back cover on the wall where you want to mount it. The back cover may be mounted using the supplied screws or the double-sided tape.
4. Ensure the arrow on the back cover is pointed up (figure 3) and mount it to the wall.
5. Put the top half (with battery installed) over the bottom half and snap it closed.

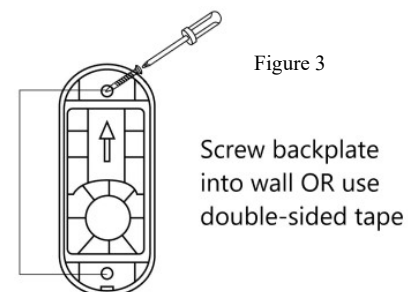
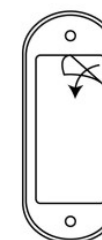
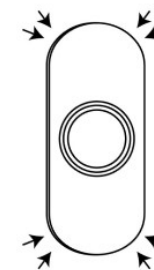
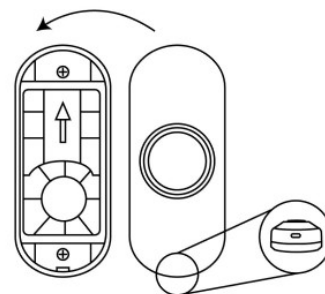


Figure 3



Low Battery Indicator:

When the battery in the ERA-PBTX is low and needs to be replaced, it signals the receiver to double-play the programmed melody when triggered.



For example, if you have programmed the receiver to play the 4-note Westminster Chime when the push button is triggered, the receiver will play the 4-note Westminster Chime

twice in a row.

Programming with Other Receivers:

The ERA-PBTX is compatible with all receivers in the ERA series. Programming is similar, except for programming mode and melody selection/change. Please consult the receiver’s manual when programming.

TECHNICAL SUPPORT

After reading the manual, please contact us if you encounter any difficulties operating or programming this product. You can reach us by phone at 904-245-1884 or by email at info@safeguardsupply.com.

Warranty

Safeguard Supply, an LHE, Inc. company, warrants this product to be free of defects in materials and workmanship for a period of one year from the date of purchase. This warranty does not cover damage resulting from accident, abuse, act of God, or improper operation. If this product does become defective, simply return it to Safeguard Supply. Please include a note describing the troubles along with your name and return address as well as the original sales receipt. If the product is covered under the warranty, it will be repaired or replaced at no charge. If it is not covered by the warranty, you will be notified of any charges before work is done.

FCC Statement

This equipment complies with FCC radiation exposure limits set forth for an uncontrolled environment. This equipment should be installed and operated with minimum distance 5mm between the radiator and your body. This transmitter must not be co-located or operating in conjunction with any other antenna or transmitter.


This device complies with Part 15 of the FCC Rules. Operation is subject to the following two conditions: (1) this device may not cause harmful interference, and (2) this device must accept any interference received, including interference that may cause undesired operation.

changes or modifications not expressly approved by the party responsible for compliance could void the user's authority to operate the equipment.

This equipment has been tested and found to comply with the limits for a Class B digital device, pursuant to Part 15 of the FCC Rules. These limits are designed to provide reasonable protection against harmful interference in a residential installation. This equipment generates, uses and can radiate radio frequency energy and, if not installed and used in accordance with the instructions, may cause harmful interference to radio communications. However, there is no guarantee that interference will not occur in a particular installation.

If this equipment does cause harmful interference to radio or television reception, which can be determined by turning the equipment off and on, the user is encouraged to try to correct the interference by one or more of the following measures:

- Reorient or relocate the receiving antenna.
- Increase the separation between the equipment and receiver.
- Connect the equipment into an outlet on a circuit different from that to which the receiver is connected.
- Consult the dealer or an experienced radio/TV technician for help.

WARNING	
<ul style="list-style-type: none">• INGESTION HAZARD: This product contains a button cell or coin battery.• DEATH or serious injury can occur if ingested. A swallowed button cell or coin battery can cause internal Chemical Burns in as little as 2 hours.• KEEP new and used batteries OUT OF REACH of CHILDREN• Seek immediate medical attention if a battery is suspected to be swallowed or inserted inside any part of the body.	
This product may contain button cells or coin batteries, including CR1632, CR2016, CR2032, and CR2450, each with a nominal voltage of 3V.	

- remove and immediately recycle or dispose of used batteries according to local regulations and keep away from children. **DO**
- **NOT** dispose of used batteries in household trash or incinerate.
- Call a local poison control center for treatment information.
- This product uses a Lithium CR2450 coin style battery with a nominal voltage of 3V.
- Non-rechargeable batteries are not to be recharged.
- **DO NOT** force discharge, recharge, disassemble, heat above (manufacturer's specified temperature rating) or incinerate. Doing so may result in injury due to venting, leakage, or explosion resulting in chemical burns.
- Ensure the batteries are installed correctly according to polarity (+ and -).
- **DO NOT** mix old and new batteries, different brands or types or batteries, such as alkaline, carbon-zinc, or rechargeable batteries.
- Remove immediately and recycle or dispose of batteries from equipment not used for an extended period of time according to local regulations.
- Always completely secure the battery compartment. If the battery compartment does not close securely, stop using the product, remove the batteries, and keep them away from children.